

# STRATEGIC PLAN



## MISSION

To provide and promote hospice palliative care for individuals and their families.



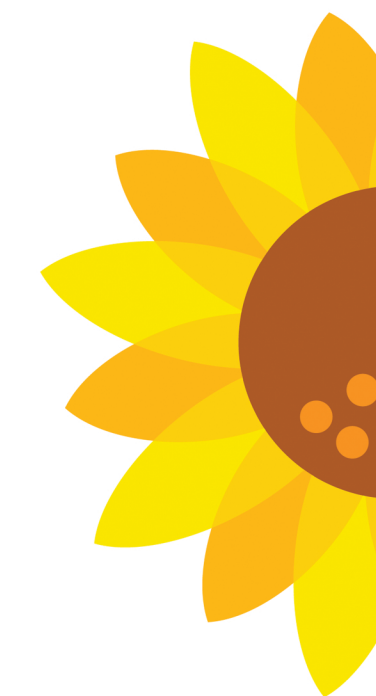
## VISION

Hospice Wellington is recognized by our communities for its leadership in meeting the hospice palliative care needs in Guelph and Wellington County.



## VALUES

- Dignity
- Accessibility
- Inclusiveness
- Leadership
- Compassion
- Accountability
- Collaboration



## STRATEGIC IMPERATIVES

- Organizational Capacity and Financial Sustainability
- Equitable Service Access
- Awareness, Education, and Community Engagement
- Advocacy
- Hospice Palliative Care Leadership